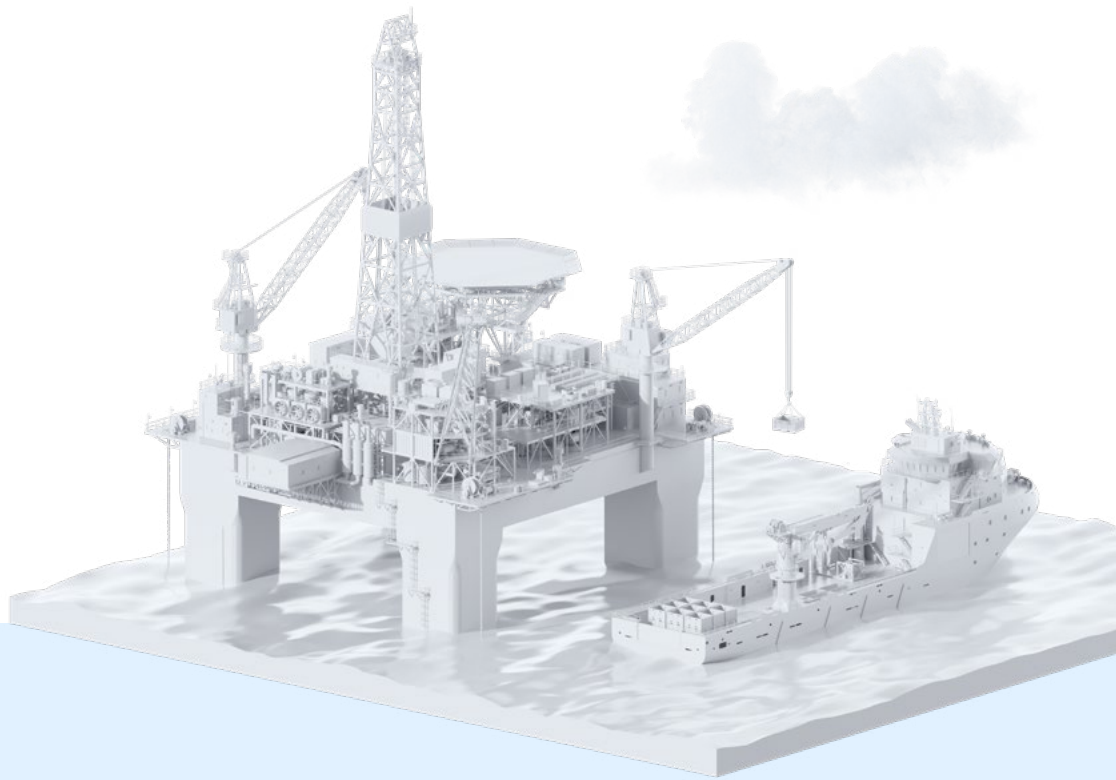


Offshore Container Fleet Guide

Solutions designed to drive forward
the offshore energy industry.



[oegoffshore.com](https://www.oegoffshore.com)

Standard and bespoke cargo
handling equipment for the safe
carriage of cargo in an offshore
environment.

Offshore Container Fleet

Units certified in accordance with DNV 2.7-1, EN 12079 or ISO 10855

CONTAINER AND TANK CERTIFICATION

Available online 24/7 via our website

Key

Heights taken at stacking blocks on all units.

All dimensions and weights are accurate at time of printing.

Please check exact specifications of units when ordering as dimensions and tare weights are of the most recent additions to the hire fleet.

Container Type
Description/Additional Feature
Outside Dim (L x W x H) - mm
Tare Weight - Kg
Payload - Kg
Maximum Gross Weight - Kg
OEG Design Type

Mini Containers



6ft Mini Enclosed/Sheff 1,666 x 1,912 x 2,596 1,500 4,000 5,500 Type 1	6ft Tall Mini Enclosed/Sheff 1,666 x 1,912 x 2,796 1,570 5,000 6,670 Type 2	6ft Extra Tall Mini Enclosed/Sheff 1,666 x 1,912 x 2,900 1,610 5,000 6,610 Type 3
---	--	--

Dry Goods Containers Includes cargo safety nets / Hi-Cube (HC) 9ft 6in option.



8ft Container Enclosed 2,378 x 2,438 x 2,591 1,940 7,810 9,750 Type 57	10ft Container Enclosed 2,991 x 2,438 x 2,591 2,365 7,750 10,115 Type 29	15ft Container Enclosed 4,524 x 2,438 x 2,591 2,940 9,710 12,650 Type 56	20ft Container Enclosed 6,058 x 2,438 x 2,591 3,800 15,500 19,300 Type 69
---	---	---	--

Open Top Containers Includes cargo nets and / or tarpaulins / removable rail option available Hi-Cube (HC) 9ft 6in & heavy lift with MGW 25,000kgs also available.



10ft Open Top Open Top Container 2,991 x 2,438 x 2,591 2,220 8,000 10,220 Type 73	13ft Open Top Open Top Container 4,013 x 2,438 x 2,591 2,610 9,800 12,410 Type 65	20ft Open Top Open Top Container 6,058 x 2,438 x 2,591 3,450/4,140 9,750/20,860 13,200/25,000 Type 23/77	22ft Open Top Open Top Container 6,671 x 2,438 x 2,591 3,700 10,000 13,700 Type 148	30ft Open Top Open Top Container 9,125 x 2,438 x 2,818 7,325 14,150 21,475	Extra-wide Open Top Open Top Container 9,770 x 3,482 x 2,740 6,969 x 3,349 x 3,040 10,700 / 8,420 25,000 / 25,000 35,700 / 33,420
--	--	---	--	--	--

Half Height Containers Includes cargo nets and / or tarpaulins / heavy lift also available to MGW 25,000kgs.



10ft Half Height Removable Side 2,991 x 2,438 x 1,281 1,380 7,940 9,320 Type 33	15ft Half Height Removable Side 4,612 x 2,416 x 1,411 2,230 10,500 12,730 Type 180	20ft Half Height Removable Side 6,058 x 2,438 x 1,281 2,570 10,000 12,570 Type 141	23ft Half Height Removable Side 6,918 x 2,416 x 1,423 3,350 12,000 15,350 Type 97	30ft Half Height Removable Side 9,125 x 2,438 x 1,281 3,770 12,000 15,770 Type 120	40ft Half Height Removable Side 12,192 x 2,438 x 1,281 4,970 20,030 25,000 Type 157
--	---	---	--	---	--

Wireline Baskets



Various Sizes Available Wireline Basket (3.6m) 12ft x 4ft x 2ft 5" Type 170 (6m) 20ft x 4ft x 2ft 5" Type 169 (7.3m) 24ft x 4ft x 2ft 5" Type 168

Cargo Baskets Variety of sizes (4ft - 92ft) available to suit customer requirements. Option of cargo safety nets available.



Cargo Basket - Small (1.2m) 4ft x 4ft x 2ft Type 44 (1.8m) 6ft x 4ft x 4ft Type 101 (2.4m) 8ft x 4ft x 4ft Type 39 (3m) 10ft x 4ft x 4ft Type 48 (3.6m) 12ft x 4ft x 4ft Type 98 (4.5m) 14ft x 4ft x 4ft Type 160	Cargo Basket - Mid Size (4.8m) 16ft x 4ft x 4ft Type 19 (6m) 20ft x 4ft x 4ft Type 227 (7m) 23ft x 4ft x 4ft Type 47 (8.5m) 28ft x 4ft x 3ft Type 43 (9.3m) 30ft x 4ft x 4ft Type D022	Cargo Basket - Large (10.6m) 35ft x 4ft x 4ft Type 121 (11.8m) 39ft x 4ft x 4ft Type 37 (12.2m) 40ft x 4ft x 4ft Type 99 (13.1m) 43ft x 4ft x 4ft Type 64 (14m) 46ft x 4ft x 4ft Type 106	Cargo Basket - Super Size (15.2m) 50ft x 4ft x 4ft Type 118 (16.1m) 53ft x 4ft x 4ft Type 107 (18.3m) 60ft x 4ft x 4ft Type 191 (20.0m) 65ft x 4ft x 4ft Type 213 (22.8m) 75ft x 4ft x 4ft Type 202	Cargo Basket - Long (23.4m) 77ft x 4ft 2" x 3ft (24.9m) 82ft x 4ft 2" x 3ft (26.5m) 87ft x 4ft 2" x 3ft (28m) 92ft x 4ft 2" x 3ft
--	--	---	---	--

Drum Baskets



5ft x 5ft Drum Basket Mesh walls and floor 1,462 x 1,516 x 1,585 640 1,860 2,500 Type 239	Drum Baskets (2.4) 8ft x 6ft x 5ft Type 35 (3.6m) 12ft x 4ft x 5ft Type 54 (4.2m) 14ft x 6ft x 6ft Type 232 All with side doors
--	--

Personnel Baskets



2 Men Personnel Basket For Personnel Transfer 1,474 x 1,154 x 2,293 640 2,000 2,640 Type 87	27ft Maintenance Basket For Maintenance Work 8,296 x 1,232 x 2,450 2,200 7,000 9,200 Type 89
--	---

Tool Baskets



Tool Basket Various Sizes Available (4.8m) 16ft x 2ft x 3ft Type D016 (6m) 20ft x 5ft x 4ft Type 129 (7.8m) 25ft x 3ft x 3ft Type 40 (8.5m) 28ft x 2ft x 2ft / 4ft x 4ft
--

Tool Boxes



6ft Cargo Basket With Aluminium Lid Cargo Basket 1,793 x 1,184 x 1,207 740 4,260 5,000 Type 101	9ft / 2.8m Tool Box Toolbox 2,400 x 1,200 x 1,085 970 2,730 5,000 3,700	13ft / 4m Tool Box Toolbox 4,060 x 1,390 x 968 1,400 7,900 6,000 9,300
--	--	---

Mud Skips / Drill Cutting Bins



5T (16.5bb) Mud Cutting Skip Vacuum rated 0.3bar/5psi 2,100 x 1,700 x 1,281 1,000 5,000 6,000 Type 111	6T (17.6bb) Small Drill Cutting Bin (SDCB) Vacuum rated available 2,412 x 1,712 x 1,327 1,450 6,050 7,500 Type 214	11T (23bb) Mud Cutting Skip Vacuum rated 0.5bar/7psi 2,213 x 1,852 x 1,610 1,590 9,410 11,000 Type 196
---	---	---

Waste Skips Cargo safety nets and tarpaulins available.



13ft Boat Skip 5.5m ³ 3,965 x 1,829 x 1,504 1,390 7,610 9,000 Type 110	Front End Loading (FEL) Skip 3.29m ³ 2,060 x 1,574 x 1,611 1,030 3,970 5,000 Type 79	9ft Quick Discharge System (QDS) 7m ³ 2,783 x 2,002 x 2,033 1,840 5,660 7,500 Type 183	9ft Cargo Skip 7m ³ 2,800 x 1,990 x 1,645 1,500 4,000 5,500	12ft Waste Skip 7.3m ³ 3,670 x 1,841 x 1,557 1,290 7,500 8,790 Type 119
--	--	--	--	---

Waste Compactors & Bags



Static Bagging Compactor 2,680 x 1,650 x 2,700 2,100 Bag SWL - 1,250 Type WC001	Air Driven Compactor 3,000 x 1,700 x 2,032 2,800 3,200 6,000	Static Bagging Compactor Bags Available from stock Client logo if preferred Polypropylene interwoven bags Capacity - 0.85 cu m / 30 cu ft SWL - 1250 kg / 2750 lb with a 5:1 safety factor
--	---	--

Transportation Frames



20ft Lifting Frame Equipment Lifting Frame 6,058 x 2,438 x 2,591 3,980 21,020 25,000 Type 61	Offshore Tubular Transportation Frames 4,355 x 1,345 x 1,450 1,100 10,900 12,000	DNV 2.7-3 Lifting Frames 8,010 x 5,000 x 3,066 6,800 x 4,500 x 3,066 11,100 / 8,800 30,000 / 30,000 41,270 / 38,800
---	--	---

Gas Bottle Racks



12 Tall Bottle Rack With Separator Bars & Chains 1,378 x 1,108 x 2,443 670 2,000 2,670 Type 72	16 Bottle Rack With Separator Bars 1,410 x 1,368 x 2,182 1,140 4,000 5,140 Type 95	25 Bottle Rack 25 Cylinder 1,634 x 1,462 x 2,480 1,050 2,550 3,600
---	---	--

Intermediate Bulk Containers (IBCs) & Carriers



Single IBC Carrier 1,516 x 1,462 x 1,758 920 5,000 5,920 Type 154	Quad IBC Carrier 3,110 x 2,923 x 2,689 3,270 11,500 14,770 Type 266	Intermediate Bulk Containers UN31A/Y 1,325 Litre (350 GAL) / 2,082 Litre (550 GAL) 1,500 x 1,160 x 1,650 / 2,340 520 / 580 2,980 / 4,420 3,500 / 5,000 Type 1001 / 1002	FIBC Container Including Cargo Safety Net 1,800 x 1,600 x 2,820 1,860 5,240 7,100	4 x IBC Mini Container Shelved 2,260 x 1,820 x 2,941 2,370 4,930 7,300
---	---	--	---	--

Workshop Containers



Mini Workshops Workshop Container 1,666 x 1,912 x 2,596 1,666 x 1,912 x 2,796 1,666 x 1,912 x 2,900	Workshop Containers 10ft x 8ft 2,991 x 2,438 x 2,591 15ft x 8ft 4,524 x 2,438 x 2,591 20ft x 8ft 6,058 x 2,438 x 2,591	NORSOK Z-015 Workshop Type E Workshop Container 2,991 x 2,438 x 2,577 4,260 x 2,438 x 2,818 6,058 x 2,438 x 2,591	10ft Rigging Loft Rigging Loft 2,991 x 2,438 x 2,587 3,150 7,150 10,300	20ft Rigging Loft Rigging Loft 6,058 x 2,438 x 2,591 5,000 10,000 15,000
--	---	---	---	--

Refrigerated Units Diesel generator available on 20ft units.



10ft Grocery Box Insulated / Non Insulated 2,991 x 2,438 x 2,591 2,365 7,750 10,115 Type 29	Chiller/Freezer Units 8ft x 76ft 2,553 x 2,330 x 3,130 10ft x 8ft 2,991 x 2,438 x 2,591 20ft x 8ft 6,058 x 2,438 x 2,591	10ft High Cube Zone 2 Refrigeration / Freezer Unit 2,040 x 2,090 x 2,260 4,500 7,500 12,000 Classified for Zone 2 Haz Area	20ft Dual Zone Unit Chiller / Freezer 6,050 x 2,440 x 2,890 7,500 18,700 15,000
---	---	---	---

A60 Offshore Modules Includes pressurisation, air conditioning, fire and gas systems and A60 fire rating.



Workspace Modules Zoned / Safe Area / NORSOK Z-015 10ft/3m - 34ft/10.3m Laboratories Control Rooms MWD / LWD	A60 Ancillary Modules 34ft / 10.3m Medic Suite Laundry Galley / Mess Gymnasium / Locker Meeting / Recreation	Accommodation Modules 20ft / 6m 25ft / 76m 34ft / 10.3m Designed to accommodate 1-8 people
--	---	---

ISO Tanks



20ft Standard ISO Tank 24,000L 2,438 x 6,096 x 2,591 3,600 32,400 36,000	Cryogenic ISO Tank 20ft and 40ft 175 22 bar pressure 6,058 / 12,192 x 2,438 x 2,591 8,900 / 12,200 27,300 / 21,800 36,000 / 34,000
--	---

General Tanks T3,T4 & T7



Waste Oil Tanks - Vertical 2,900L 1,922 x 1,922 x 2,420 4,000L 2,268 x 2,268 x 2,500 4,800L 2,200 x 2,200 x 2,571 5,000L 2,310 x 2,310 x 2,560 Waste Oil Tanks - Horizontal 2,900L 2,160 x 1,900 x 2,331
--

Chemical Tanks T4, T7, T11 & T14



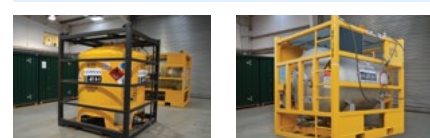
Offshore Chemical Tanks Vertical 1,100L 1,372 x 1,372 x 1,800 1,500L 1,372 x 1,372 x 2,210 2,900L 1,922 x 1,922 x 2,420	Offshore Chemical Tanks Vertical 4,000L 1,995 x 1,995 x 2,571 4,000L Bunded Chemical Tank 4,200L 1,995 x 1,995 x 2,571 4,950L 1,995 x 1,995 x 2,911	Offshore Chemical Tanks Horizontal 2,300L 2,150 x 1,900 x 2,200 4,546L 2,750 x 1,850 x 2,337 *8,000L 2,991 x 2,438 x 2,591 *20,000L 6,058 x 2,438 x 2,591 (* Dual certified DNV/CSC)
---	--	--

Acid Tanks T14



3,875 Litre Acid Tank Vertical 1,995 x 1,995 x 2,571 2,300 5,700 8,000	6,000 Litre Acid Tank (Vertical) Lining options LLDPE & Butyl 2,438 x 2,438 x 2,750 3,100 9,899 12,999	7,600 Litre Acid Tank (Horizontal) 2,438 x 2,438 x 2,591 4,100 20,900 25,000	8,200 Litre Acid Tank 10ft ISO Horizontal 2,991 x 2,438 x 2,591 3,650 12,350 16,000 Type AT001	17,000 Litre / 20ft Acid Tank Horizontal Lining option LLDPE & Butyl 6,058 x 2,438 x 2,591 6,300 18,700 25,000
--	---	--	---	---

Jet A-1 Fuel Tanks T4, T7 & T11 - Compliant to UK CAP 437



Jet A-1 Fuel Tanks Vertical 2,700L 1,995 x 1,995 x 2,235 2,900L 2,150 x 1,900 x 2,331 3,800L 1,995 x 1,995 x 2,571 4,000L 1,995 x 1,995 x 2,571 4,200L 1,995 x 1,995 x 2,571	Jet A-1 Fuel Tanks Horizontal 2,700L 2,150 x 1,900 x 2,281 2,900L 1,995 x 1,995 x 2,235 4,500L 2,650 x 2,000 x 2,556
---	---

Cryogenic Tanks




10ft Cryogenic Tank 2,991 x 2,438 x 2,591 5,370 6,065 11,435

If you can't see the size you need contact OEG for a custom build to suit your requirements.

sales@oegoffshore.com
oegoffshore.com





Ontime, anytime, anywhere

We bring the best of size
and scale, combined with
bespoke solutions

Americas

Brazil
Canada
Guyana
Mexico
Suriname
Trinidad
USA

UK & Europe

Denmark
Germany
Italy
Netherlands
Norway
Romania
United Kingdom

Africa

Angola
Gabon
Ghana
Nigeria
Republic of the
Congo
Senegal
South Africa

Caspian

Azerbaijan
Kazakhstan

Middle East

Qatar
Saudi Arabia
U.A.E

Asia Pacific

Brunei
China
Indonesia
Malaysia
Singapore
Thailand
Vietnam

Australasia

Australia
New Zealand



sales@oegoffshore.com
oegoffshore.com

Follow us

