

10ft (3m) High Cube Refrigeration / Freezer Module

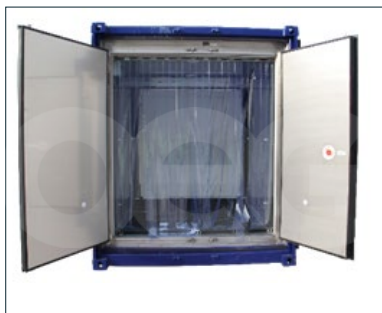


DNV 2.7-1 REFRIGERATED MODULES FOR RENTAL AND SALE

OEG Offshore's extensive fleet of refrigeration and freezer solutions provide temperature controlled conditions for the transportation and storage of foodstuffs to offshore locations. Available in a range of sizes the refrigerated units can be hooked up to the vessel or platform's own power supply.

All modules are certified in accordance with DNV 2.7-1 and EN 12079 standards and are available from our global base network. A range of optional extras and customisations can also be specified.

Equipment supplied meets the specific requirements of the latest international standards & approvals DNV 2.7-1 / EN 12079 or ISO 10855, SEPco, API, DOT, CFR, ASME VIII DIV 1., IMDG, ADR/RID & UK CAA CAP 43.



10ft (3m) High Cube Refrigeration / Freezer Module



KEY FEATURES

- > Temperature ranging from -24°C to +24°C
- > Electronic control panel enables the adjustment of internal temperature and control of cooling plant function
- > Power hook up cable
- > Hygienic, easy-to-clean stainless steel or GRP interior
- > See-through lockable control panel
- > Double wing doors with heavy duty hinges
- > Man trapped alarm for personnel safety
- > Both container and sling assemblies are rated to DNV 2.7-1
- > 3 phase 50HZ 380-415V, 60HZ 440-460V
- > Internal cold room doors
- > Rear protection gates
- > Removable airflow, high grip flooring
- > Internal lighting
- > Flashing strobe beacon when unit is powered
- > Removable shelving systems
- > Low voltage 24v internal equipment

OPTIONS

- > Butchers door curtain
- > Internal shelving
- > Diesel generator
- > Custom paint colour & customer logos
- > GPS Tracking

TECHNICAL SPECIFICATION

10FT (3M) HIGH CUBE REFRIGERATED / FREEZER MODULE	METRIC (MM)	IMPERIAL (FT/INCHES)
EXTERNAL DIMENSIONS	2990 x 2440 x 2890	9'10" x 8'1" x 9'6"
INTERNAL DIMENSIONS	2040 x 2090 x 2260	6'9" x 6'11" x 7'5"
TARE WEIGHT	4750 Kg	10471 lbs
MAX. GROSS WEIGHT	12000 Kg	26455 lbs
PAYLOAD	7250 Kg	15983 lbs

E & OE
All dimensions and weights are accurate at the time of creation. Please check exact specifications of units when ordering.

First Choice in Offshore Cargo Carrying Units, Compactors and Modules worldwide for Sale and Rental



sales@oegoffshore.com
www.oegoffshore.com