

FEATURES

- Compacts waste into 55/85 gallon drums
- Crushes 55 gallon drums to 4"
- Anvil support base to ensure drum integrity
- Safety limit switch on door
- HEPA filtration available
- Drip pan available
- Drum handling pallet included
- Drum crushing pallet included
- Two hand operation for operator safety
- Reduce disposal costs of hazardous waste disposal costs by compacting into UN/DOT approved drums
- Air or electric operations, ex-proof rated available
- UL listed components
- Meets and exceeds International MARPOL 73/78 Annex V

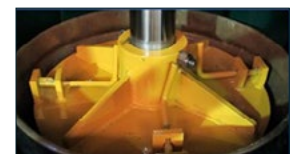


TECHNICAL SPECIFICATION

UNIT	MODEL MPC40	MODEL MPC60	MODEL MPC85
DRUM SIZE	55 gal. / 208 litres	55 gal. / 208 litres	85 gal. / 321 litres
HEIGHT	104" / 2641 mm	118" / 2997 mm	113" / 2870 mm
WIDTH	39" / 990 mm	48" / 1219 mm	54" / 1372 mm
DEPTH	38" / 965 mm	39" / 990 mm	46" / 1168 mm
DECK SPACE	10 ft² / 1.0 m²	13 ft² / 1.2 m²	17 ft² / 1.6 m²
WEIGHT	1,615 lbs / 733 kg	1,840 lbs / 835 kg	3,100 lbs / 1406 kg
COMPACTION	30,000 lbs / 13607 kg	60,000 lbs / 27215 kg	85,000 lbs / 38555 kg
ELECTRICAL RATING	5HP 230/460V 15.5 / 7.8 AMP	5HP 230/460V 15.5 / 7.8 AMP	10HP 230/460V 26.8 / 13.4 AMP
AIR REQUIREMENT	100PSI / 75 CFM	100PSI / 75 CFM	100PSI / 75 CFM
CYCLE TIME	60 seconds	96 seconds	75 seconds
OIL CAPACITY	10 gal / 37.8 litres	10 gal. / 37.8 litres	10 gal. / 37.8 litres
IN DRUM COMPACTION	Yes	Yes	Yes
DRUM COMPACTION	No	Yes	Yes



Ram extension installed to crush drums (MPC60 or 85)



Ram extension removed to compact



Example of crushed drum to 4.5" height (MPC60)

Note: All measurements are rounded up to the nearest whole unit or decimal.